

Stainless Steel

WOOD PANEL

Tested Pressure : 12 bar

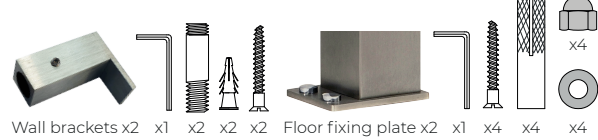
Max. Temperature: 95°C

10 years warranty

Material : Stainless Steel 304 
 Wood (MDF)  RAL options
 Connection : Wall connection G1/2"
 Construction : 40x10x1,5 mm 
 40x30x1,5 mm 

Package contents (Wall / Floor fixing)

Assembly parts



Air vent x2

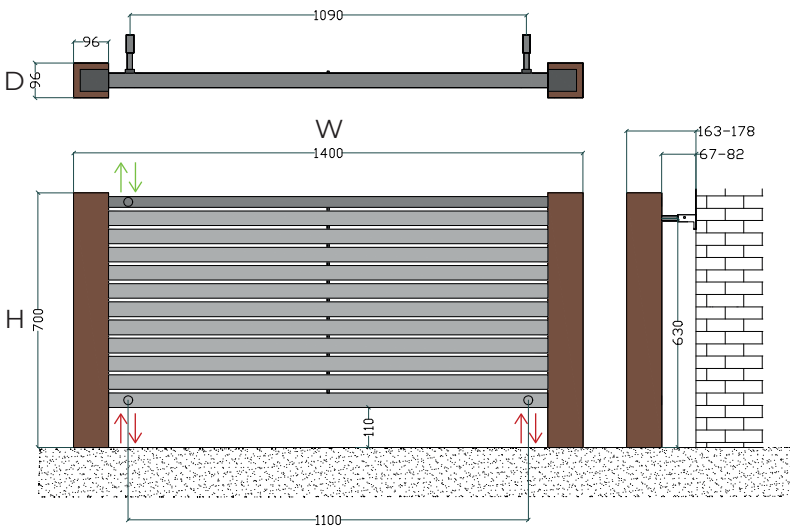


Air vent cap x2

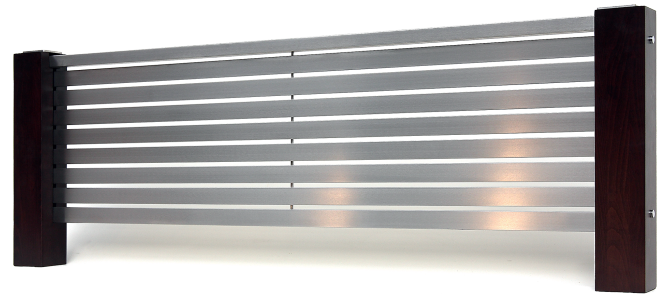


 inlet/outlet

 air vent



WOOD PANEL 70-140



WOOD PANEL 55-160

Model Code	Height (H) mm	Width (W) mm	Depth (D) mm	Slice Quantity	Pipe Centers mm	Heat Output ΔT 50°C	
						Watt	Btu
55-110	550	1100	96	9	800	363	1240
55-160	550	1600	96	9	1300	525	1792
70-140	700	1400	96	12	1100	607	2071
70-210	700	2100	96	12	1800	908	3098
120-60	1200	600	96	20	290	423	1443

*Can be manufactured in all sizes & slice quantities

*Dimension and position of pipe centers can be customized